

Messi & Paoloni

COAXIAL CABLES

Since 1946
proud of "OUR"
MADE in ITALY

MP

CPR

Ready

Products in conformity with the
directive U.E. 305/2011

www.messi.it

2018 Edition

Messi & Paoloni celebrates on
10th March 2018, 72 years in
business, 62 of which
have been spent in
telecommunications.



74 years ago, the 18th of July 1944, Ancona was seized by the II Polish Army Corps. During the Anglo-American occupation, two young boys, the 17 years old Messi Michele and the 21 years old Dino Paoloni, were employed as a civil personnel in the allied military transmitting station of Ancona harbour. It was here, during this job, that they first

met each other, sharing their passion for telecommunications. Two years later, the two friends decided to establish the Messi & Paoloni company. During the first ten years of their activity, these young boys, selected their purchases at the post-war Photokina exhibition in Cologne, and rushed all around central Italy, selling, installing and servicing film projectors in all the new cinemas being rebuilt after the destruction of the war. In June 1956 they became Fracarro agents for Marche and Umbria, settling back to their first love: Radiofrequency. During this long term cooperation with Fracarro (the major Italian TV antenna manufacturer), they decided to establish in 1974 the coaxial cable factory. With the acquisition of 100% of the shares in 1995, Stefano and Maurizio Messi took up the torch from the "founders", carrying out passionately complex projects and continuing the legacy of innovation. In 1984, we developed our first satellite cable, model **SC/100AG** and in 1990 we created the model **DIGISAT 5 ELITE**, which 31 years ago, with a screening efficiency in **A++ CLASS**, was already putting together all the best features for a digital cable. After an evolution lasted 31 years, DIGISAT 5 ELITE is by far the best 75 Ohm cable in the world (6.8 mm jacket), performing the best attenuation values for its category (25 dB/100m to 2150 MHz). The continuous improvements in the different production cycles and continuous investments in research and technological innovation, brought the "**GAS EXPANDED TL**" technology.

INDEX

PAG.2	- COMPANY PRESENTATION
PAG.3	- ELITE SERIES (LTE A++)
PAG.4	- DIGITAL UNDERGROUND CABLES (CATV A++)
PAG.5	- EXPERT SERIES / SPEEDY SERIES (LTE A+ / A)
PAG.6-7	- DIGITAL SATELLITE RECEPTION - TVCC
PAG.8	- TVCC SURVEILLANCE CABLES
PAG.9	- ARIANNA CABLE UNWINDER - ACCESSORIES
PAG.10	- CONNECTORS
PAG.11	- ALARM CABLES - FLEXIBLE TOOLS CABLES
PAG.12	- DOMESTIC CABLES - INTERCOM CABLES - FLAT TELEPHONE CABLES
PAG.13	- TRR TELEPHONE CABLES - TELEPHONIC TRANSDUCTION CABLES
PAG.14	- HI-FI AUDIO CABLES
PAG.15	- LAN CABLES
PAG.16	- PACKINGS

REFERENCE NORMS



Our products are manufactured in compliance with:

- CEI 46-1:	(construction parameters)
- EN 50117:	(screening efficiency)
- CEI EN 50289:	(SA test methods)
- IEC 60332-1-2:	(PVC and LSZH sheath)
- CEI UNEL 36762:	(sheath insulation)
- CPR305/11:	(EN 50575:2014)

Messi & Paoloni - dal 1946



RoHS COMPLIANT 2002/95/EG



ELECTRICAL DATA

MODELS:	DIGISAT 123 ELITE	DIGISAT 523 ELITE	DIGISAT 823 ELITE	DIGISAT 5 ELITE
Class:	A++	A++	A++	A++
Nominal impedance:	75 Ohm ± 3	75 Ohm ± 3	75 Ohm ± 3	75 Ohm ± 3
Capacity (pF/m)	52 ± 2	52 ± 2	52 ± 2	52 ± 2
Velocity ratio:	85 %	85 %	85 %	85 %
ATTENUATION (at 20°C) ± 5%				
MHz 5	1,4	1,1	1,0	0,8
MHz 50	5,7	4,4	4,0	3,6
MHz 200	10,8	8,4	7,6	7,4
MHz 470	16,7	13,2	11,8	11,5
MHz 860	22,9	18,3	16,2	15,8
MHz 1000	24,7	19,8	17,6	17,2
MHz 1750	33,7	26,5	23,8	23,2
MHz 2050	36,6	28,7	25,8	25,2
MHz 2150	37,5	29,4	26,5	25,9
MHz 2400	39,6	31,2	28,1	27,5
MHz 3000	44,3	35,4	31,8	31,0
SRL				
MHz 30-470	> 36 dB	> 33 dB	> 33 dB	> 33 dB
MHz 470-860	> 32 dB	> 30 dB	> 30 dB	> 30 dB
MHz 860-2150	> 26 dB	> 26 dB	> 26 dB	> 26 dB
SCREENING EFFICIENCY:				
MHz 30-1000	> 105 dB	> 105 dB	> 105 dB	> 105 dB
MHz 1000-2000	> 100 dB	> 100 dB	> 100 dB	> 105 dB
MHz 2000-3000	> 90 dB	> 95 dB	> 90 dB	> 103 dB
Transfer impedance: (mOhm/m)	< 1	< 0,9	< 0,9	< 0,3
Inner conductor resistance: (Ohm/Km)	34	21,5	17,5	17,5
Outer conductor resistance: (Ohm/Km)	33	23	23	9
Tension test (spark test):	4 kV	4 kV	4 kV	4 kV
STANDARD PACKING:	AR150	AR100	AR100	AR100
(AR100-AR150: 100m and 150m refills for Arianna unwinders)				
Other packings: 200m, 250m and 500m drums				
Compression type "F"	CMPMC37	EX6-4,9/8,3	EX6-5,1/8,3	EX6-5,1/8,3
PPC connector:	CMPMC37-A*	EX6-4,9/8,3-A*	EX6-5,1/8,3	EX6-5,1/8,3
Crimp type "F" connector:	MP-CRP5	MP-CRP6	MP-CRP 7	MP-CRP 7
Screw type "F" connector:	C.TV.FM.5 C.TV.FM.5 Oring	C.TV.FM.6	C.TV.FM.7 C.TV.FM.7 Oring	C.TV.FM.7 C.TV.FM.7 Oring

ELITE DVB-T A++ SERIES

NOTE: for outdoor use we warmly advise PPC® "AquaTight®" connectors.

CONSTRUCTION PARAMETERS

DIGISAT 123 ELITE	DIGISAT 523 ELITE	DIGISAT 823 ELITE	DIGISAT 5 ELITE
SHEATH			
PVC Ø 5 mm ± 0,15 mm	PVC Ø 6 mm ± 0,15 mm	PVC Ø 6,8 mm ± 0,15 mm	PVC Ø 6,8 mm ± 0,15 mm
BRAID			
Al/Mg screening 80%	Al/Mg screening 86%	Al/Mg screening 82%	CU screening 82%
96 wires	144 wires	144 wires	144 wires
TAPE			
screening 100%			
AL-PET-AL	AL-PET-AL	AL-PET-AL	CU-PET
DIELECTRIC			
High pressure physical injection foamed polyethylene			
PEG Ø 3,5 mm ± 0,05 mm	PEG Ø 4,3 mm ± 0,05 mm	PEG Ø 4,8 mm ± 0,05 mm	PEG Ø 4,8 mm ± 0,05 mm
INNER CONDUCTOR			
CU Ø 0,81mm	CU Ø 1,02mm	CU Ø 1,13mm	CU Ø 1,13mm



The new label with all the reference norms currently in force.

* = AquaTight for outdoor use

OUR PRODUCTS ARE MANUFACTURED IN COMPLIANCE WITH: CEI 46-1 (construction parameters); EN 50117 (screening efficiency); CEI EN 50289(SA test methods); IEC 60332-1-2(cables with LSZH and PVC jacket); CPR305/11(EN 50575:2014)

Messi & Paoloni - dal 1946



RoHS COMPLIANT 2002/95/EG



DIRECT BURIAL & CATV - DVB-T

NOTE : for outdoor use we warmly advise PPC® "AquaTight®" connectors.

CONSTRUCTION PARAMETERS

INTSAT 110 ELITE	INTSAT 170 ELITE	IK 12 ELITE	INTSAT 220 ELITE
SHEATH			
PE Ø 6,9 mm ± 0,15 mm	PE Ø 10,1 mm ± 0,15 mm	PE Ø 10,1 mm ± 0,15 mm	PE Ø 12,7 mm ± 0,15 mm
with petrol jelly layer anti-oxidation			
BRAID			
CU screening 82% 144 fili	CU screening 66% 144 fili	CU/Sn screening 65% 128 fili	CU screening 55% 144 fili
FOIL			
screening 100%			
CU-PET	CU-PET	CU-PET	CU-PET
DIELECTRIC			
High pressure physical injection foamed polyethylene			
PEG Ø 4,8 mm ± 0,05 mm	PEG Ø 7,25 mm ± 0,05 mm	PEG Ø 7,25 mm ± 0,05 mm	PEG Ø 9,9 mm ± 0,05 mm
INNER CONDUCTOR			
CU Ø 1,13mm	CU Ø 1,63mm	CU Ø 1,63mm	CU Ø 2,2mm



The new label with all the reference norms currently in force.

* = AquaTight for outdoor use

ELECTRICAL DATA

MODELS:	INTSAT 110 ELITE	INTSAT 170 ELITE	IK 12 ELITE	INTSAT 220 ELITE
Class:	A++	A++	A++	A++
Nominal impedance:	75 Ohm ± 3	75 Ohm ± 3	75 Ohm ± 3	75 Ohm ± 3
Capacitance (pF/m)	52 ± 2	52 ± 2	52 ± 2	52 ± 2
Velocity ratio:	85%	85%	85%	85%
ATTENUATIONS (at 20°C) ± 5%				
MHz 5	0,8	0,7	0,9	0,4
MHz 50	3,6	2,6	2,7	1,8
MHz 200	7,4	5,4	5,3	4,1
MHz 470	11,5	8,5	8,5	6,7
MHz 860	15,8	11,7	11,6	9,4
MHz 1000	17,2	12,6	12,5	10,4
MHz 1750	23,2	17,0	17,0	14,9
MHz 2050	25,2	18,4	18,4	16,5
MHz 2150	25,9	19,0	19,0	17,0
MHz 2400	27,4	20,2	20,2	18,3
MHz 3000	31,0	22,8	22,7	21,6
SRL				
MHz 30-470	> 33 dB	> 32 dB	> 32 dB	> 32 dB
MHz 470-860	> 30 dB	> 28 dB	> 28 dB	> 28 dB
MHz 860-2150	> 26 dB	> 25 dB	> 23 dB	> 26 dB
SCREENING EFFICIENCY:				
MHz 30-1000	> 105 dB	> 105 dB	> 100 dB	> 100 dB
MHz 1000-2000	> 105 dB	> 100 dB	> 95 dB	> 95 dB
MHz 2000-3000	> 103 dB	> 90 dB	> 85 dB	> 85 dB
Transfer impedance: (mOhm/m)	< 0,3	< 0,9	< 0,8	< 0,9
Inner conductor resistance: (Ohm/Km)	17,5	8,5	8,5	4,5
Outer conductor resistance: (Ohm/Km)	9	9	12	8,5
Tension test (spark test)	8 kV	8 kV	8 kV	8 kV
STANDARD PACKING:	AR100	B500	B500	B500
(AR100-AR150: 100m and 150m refills for Arianna unwinders)				
Other packings: 200m, 250m and 500m drums				
Compression type "F"	EX6-5,1/8,3	EX11	EX11	---
PPC connector	EX6-5,1/8,3-A*	B004-FM*	B004-FM*	---
Crimp type "F" connector	MP-CRP7	---	---	---
Screw type "F" connector:	C.TV.FM.7	C.TV.FM.10	C.TV.FM.10	---
	C.TV.FM.7 Oring	-	-	-

OUR PRODUCTS ARE MANUFACTURED IN COMPLIANCE WITH: CEI 46-1 (construction parameters); EN 50117 (screening efficiency); CEI EN 50289(SA test methods); IEC 60332-1-2(cables with LSZH and PVC jacket); CPR305/11(EN 50575:2014)

Messi & Paoloni - dal 1946



ELECTRICAL DATA

MODELS:	DIGISAT 122 EXPERT	DIGISAT 822 EXPERT	SPEEDY5 B150	SPEEDY6 B100
Class:	A+	A+	A	A
Nominal impedance:	75 Ohm ± 3	75 Ohm ± 3	75 Ohm ± 3	75 Ohm ± 3
Capacitance (pF/m)	52 ± 2	52 ± 2	52 ± 2	52 ± 2
Velocity ratio:	85 %	85 %	85 %	85 %
ATTENUATIONS (at 20°C) ± 5%				
MHz 5	1,3	1,0	1,5	1,1
MHz 50	5,5	4,1	6,0	4,4
MHz 200	10,6	7,8	11,1	8,4
MHz 470	17,0	12,4	17,4	13,5
MHz 860	23,6	17,0	24,2	18,6
MHz 1000	25,6	18,6	26,2	20,6
MHz 1750	34,4	25,3	35,3	28,3
MHz 2050	37,2	27,5	38,6	31,1
MHz 2150	38,2	28,2	39,5	31,9
MHz 2400	40,5	30,0	42,0	33,9
MHz 3000	45,4	34,0	47,5	39,1
SRL				
MHz 30-470	> 33 dB	> 33 dB	> 30 dB	> 28 dB
MHz 470-860	> 28 dB	> 28 dB	> 25 dB	> 25 dB
MHz 860-2150	> 22 dB	> 22 dB	> 20 dB	> 22 dB
SCREENING EFFICIENCY:				
MHz 30-1000	> 85 dB	> 92 dB	> 85 dB	> 85 dB
MHz 1000-2000	> 82 dB	> 88 dB	> 82 dB	> 82 dB
MHz 2000-3000	> 80 dB	> 80 dB	> 80 dB	> 80 dB
Transfer impedance: (mOhm/m)	< 2,8	< 2	< 3	< 5
Inner conductor resistance: (Ohm/Km)	34	17,5	35	22
Outer conductor resistance: (Ohm/Km)	40	30	40	31
Tension test (spark test)	4 kV	4 kV	4 kV	4 kV
STANDARD PACKING	AR150*	AR100*	SCB150	SCB100
(AR100-AR150: 100m and 150m refills for Arianna unwinders)				
Other packings: 200m, 250m and 500m drums				
SCB150 / SCB100: cardboard box with coil unwinder (150/100m)				
Compression type "F"	CMPMC37	EX6-5,1/8,3	CMPMC37	EX6-5,1/8,3
PPC connector	CMPMC37-A*	EX6-5,1/8,3-A*	CMPMC37-A*	EX6-5,1/8,3-A*
Crimp type "F" connector	MP-CRP5	MP-CRP7	MP-CRP5	MP-CRP7
Screw type "F" connector:	C.TV.FM.5	C.TV.FM.7	C.TV.FM.5	C.TV.FM.7
	C.TV.FM.5 Oring	C.TV.FM.7 Oring	C.TV.FM.5 Oring	C.TV.FM.7 Oring

EXPERT SERIES & SPEEDY DVB-T

NOTE : for outdoor use we warmly advise PPC® "AquaTight®" connectors.

CONSTRUCTION PARAMETERS

DIGISAT 122 EXPERT	DIGISAT 822 EXPERT	SPEEDY5 B150	SPEEDY6 B100
SHEATH			
PVC Ø 5 mm ± 0,15 mm	PVC Ø 6,8 mm ± 0,15 mm	PVC Ø 5 mm ± 0,15 mm	PVC Ø 6,5 mm ± 0,15 mm
BRAID			
Al/Mg screening 70% 80 fili	Al/Mg screening 76% 128 fili	Al/Mg screening 65% 80 fili	Al/Mg screening 65% 96 fili
FOIL			
screening 100%			
AL-PET-AL	AL-PET-AL	AL-PET-AL	AL-PET-AL
DIELECTRIC			
High pressure physical injection foamed polyethylene			
PEG Ø 3,5 mm ± 0,05 mm	PEG Ø 4,8 mm ± 0,05 mm	PEG Ø 3,5 mm ± 0,05 mm	PEG Ø 4,6 mm ± 0,05 mm
INNER CONDUCTOR			
PEG CU Ø 0,81mm	PEG CU Ø 1,13mm	PEG CU Ø 0,80mm	PEG CU Ø 1,02mm

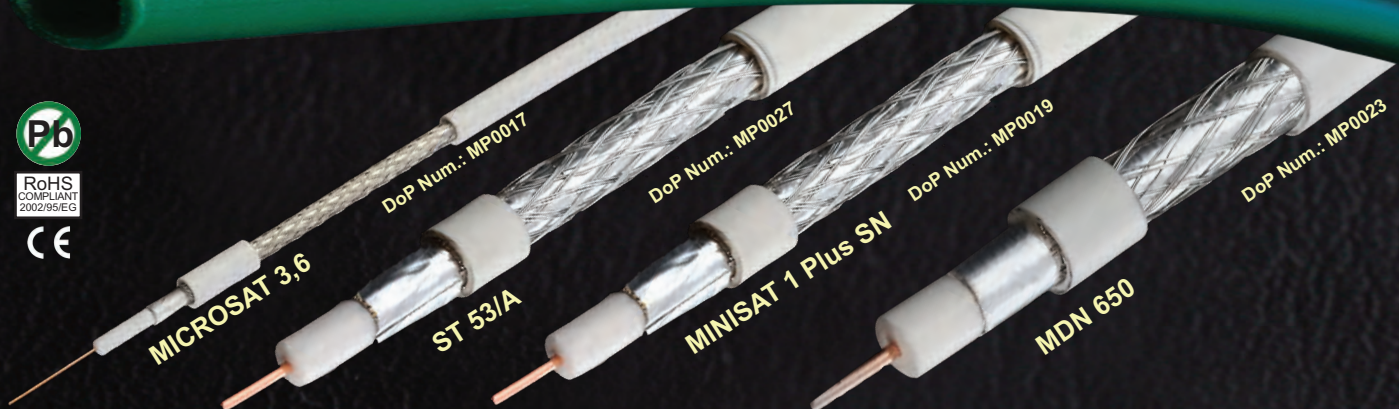


The new label with all the reference norms currently in force.

*=AquaTight for outdoor use

OUR PRODUCTS ARE MANUFACTURED IN COMPLIANCE WITH: CEI 46-1 (construction parameters); EN 50117 (screening efficiency); CEI EN 50289(SA test methods); IEC 60332-1-2(cables with LSZH and PVC jacket); CPR305/11(EN 50575:2014) * CEI UNEL 36762(sheath insulation)

Messi & Paoloni - dal 1946



B Class SATELLITE CABLES

*NOTE: for outdoor use we warmly recommend PPC® + AquaTight® connectors (see our website)

CONSTRUCTION PARAMETERS

MICROSAT 3,6 ST 53/A MINISAT 1 Plus SN MDN 650

SHEATH
 PVC Ø 3,6 mm ± 0,15 mm PVC Ø 5 mm ± 0,15 mm PVC Ø 5 mm ± 0,15 mm PVC Ø 6.6 mm ± 0,15 mm

BRAID
 Cu/Sn Al/Mg Cu/Sn Al/Mg
 copertura 68% copertura 45% copertura 45% copertura 36%
 48 fili 48 fili 48 fili 48 fili

FOIL
 screening 100%
 AL-PET AL-PET AL-PET-AL AL-PET-AL

DIELECTRIC
 High pressure physical injection foamed polyethylene
 PEG PEG PEG PEG
 Ø 1,9 mm ± 0,05 mm Ø 3,5 mm ± 0,05 mm Ø 3,5 mm ± 0,05 mm Ø 4,6 mm ± 0,05 mm

INNER CONDUCTOR
 CCS CCS CU CCS
 Ø 0,41mm Ø 0,80mm Ø 0,81mm Ø 1,02mm



The new label with all the reference norms currently in force.

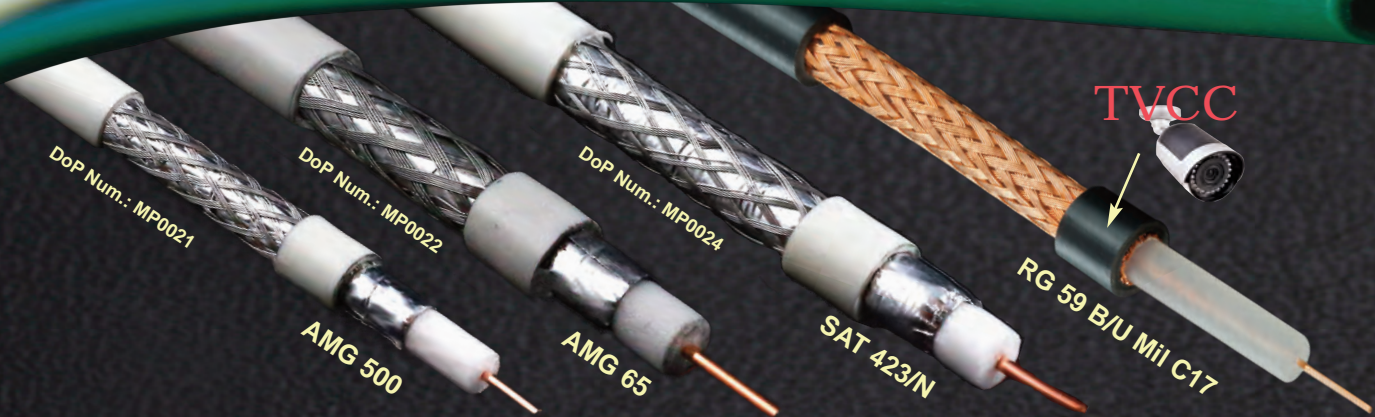
* = AquaTight for outdoor use

ELECTRICAL DATA

MODELS:	MICROSAT 3,6	ST 53/A	MINISAT 1 Plus SN	MDN 650
Class:	B	B	B	B
Nominal Impedance:	75 Ohm ± 3	75 Ohm ± 3	75 Ohm ± 3	75 Ohm ± 3
Capacitance (pF/m)	52 ± 2	52 ± 2	52 ± 2	52 ± 2
Velocity ratio:	85 %	85 %	85 %	85 %
ATTENUATION (at 20°C) ± 5%				
MHz 5	5,7	2,8	1,5	3,2
MHz 50	11,3	5,2	5,9	5,5
MHz 200	21,2	11,0	11,0	8,5
MHz 470	33,3	17,3	16,9	13,0
MHz 860	46,2	23,8	23,3	18,5
MHz 1000	50,1	25,7	25,3	20,0
MHz 1750	67,4	35,0	34,3	27,0
MHz 2050	73,4	38,1	37,4	29,7
MHz 2150	75,4	39,0	38,5	30,5
MHz 2400	80,2	41,0	40,5	32,5
MHz 3000	91,9	46,5	45,8	37,0
SRL				
MHz 30-470	>28 dB	>30 dB	>30 dB	>30 dB
MHz 470-860	>24 dB	>26 dB	>26 dB	>26 dB
MHz 860-2150	>20 dB	>20 dB	>20 dB	>20 dB
SCREENING EFFICIENCY				
MHz 30-1000	>75 dB	>80 dB	>80 dB	>78 dB
MHz 1000-2000	>93 dB	>78 dB	>78 dB	>70 dB
MHz 2000-3000	>90 dB	>80 dB	>80 dB	>65 dB
Transfer Impedance: (mOhm/m)	<5	<3	<3	<10
Inner cond. resistance: (Ohm/Km)	556	140	34	110
Outer cond. resistance: (Ohm/Km)	80	55	30	55
Tension test of the jacket:	4 kV	4 kV	4 kV	4 kV
STANDARD PACKING:	AR250 **	SC100	T100, BP200	AR100
** OTHER PACKINGS:	100m refills for Arianna unwinder	100m cardboard boxes	100m coil and 200m plastic bobbin	100m refills for Arianna unwinder
Compression type "F" PPC connector:	-	CMPMC37 CMPMC37-A*	CMPMC37 CMPMC37-A*	EX6-5, 1/8, 3 EX6-5, 1/8, 3-A*
BNC and Crimp type connector:	C.BNC36.MC	MP-CRP5	MP-CRP5	MP-CRP7
Screw type "F" connector:	C.TV.FM.3	C.TV.FM.5 C.TV.FM.5 Oring	C.TV.FM.5 C.TV.FM.5 Oring	C.TV.FM.7 C.TV.FM.7 Oring

OUR PRODUCTS ARE MANUFACTURED IN COMPLIANCE WITH: CEI 46-1 (construction parameters); EN 50117 (screening efficiency); CEI EN 50289(SA test methods); IEC 60332-1-2(cables with LSZH and PVC jacket); CPR305/11(EN 50575:2014)

Messi & Paoloni - dal 1946



A Class SATELLITE CABLES - TVCC

*NOTE: for outdoor use we warmly recommend PPC® "AquaTight®" connectors (see our website)

CONSTRUCTION PARAMETERS

	AMG 500*	AMG 65*	SAT 423/N*	RG 59 B/U MIL C17
JACKET				
PVC Ø 5 mm ± 0,15 mm	PVC Ø 6,5 mm ± 0,15 mm	PVC Ø 6,5 mm ± 0,15 mm	PVC Ø 6,2 mm ± 0,15 mm	
BRAID				
Al/Mg screening percentage 57%	Al/Mg screening percentage 65%	Al/Mg screening percentage 50%	CU screening percentage 91%	
64 wires	96 wires	64 wires	112 wires	
TAPE				
screening percentage 100%				---
AL-PET-AL	AL-PET-AL	AL-PET-AL		---
DIELECTRIC				
high pressure physical injection foamed polyethylene PEG	high pressure physical injection foamed polyethylene PEG	high pressure physical injection foamed polyethylene PEG	compact polyeth. PE	
Ø 3,5 mm ± 0,05 mm	Ø 4,6 mm ± 0,05 mm	Ø 4,6 mm ± 0,05 mm	Ø 3,7 mm ± 0,05 mm	
INNER CONDUCTOR				
CCS Ø 0,81mm	CCS Ø 1,02mm	CU Ø 1,02mm	CCS Ø 0,58mm	

ELECTRICAL DATA

MODELS::	AMG 500	AMG 65	SAT 423/N	RG 59 B/U
Class:	A	A	A	-
Nominal Impedance:	75 Ohm ± 3	75 Ohm ± 3	75 Ohm ± 3	75 Ohm ± 3
Capacitance: (pF/m)	52 ± 2	52 ± 2	52 ± 2	67 ± 2
Velocity ratio:	85 %	85 %	85 %	66 %
ATTENUATION (at 20°C) ± 5%				
MHz 5	2,8	3,8	1,2	2,7
MHz 50	5,2	7,4	4,4	7,7
MHz 200	11,0	10,6	8,5	15,7
MHz 470	17,3	14,5	13,3	26,5
MHz 860	24,0	19,1	18,5	38,2
MHz 1000	25,7	20,5	20,0	41,6
MHz 1750	35,0	27,2	27,2	-
MHz 2050	37,8	29,5	29,7	-
MHz 2150	38,8	30,2	30,5	-
MHz 2400	41,0	32,1	32,4	-
MHz 3000	46,5	36,3	36,8	-
SRL				
MHz 30-470	> 30 dB	> 30 dB	> 30 dB	
MHz 470-860	> 25 dB	> 25 dB	> 27 dB	
MHz 860-2150	> 20 dB	> 20 dB	> 22 dB	
SCREENING EFFICIENCY				
MHz 30-1000	> 82 dB	> 85 dB	> 85 dB	> 65 dB
MHz 1000-2000	> 78 dB	> 82 dB	> 82 dB	-
MHz 2000-3000	> 72 dB	> 80 dB	> 80 dB	-
Transfer Impedance: (mOhm/m)	< 5	< 5	< 3	-
Inner cond. resistance: (Ohm/Km)	145	110	22	278
Outer cond. resistance: (Ohm/Km)	46	31	38	11
Tension test of the jacket:	4 kV	4 kV	4 kV	4 kV
STANDARD PACKING	SC100	AR100	AR100 **	AR100 **
** OTHER PACKINGS:	100m cardboard boxes	100m refills for Arianna unwinder	100m refills for Arianna unwinder	100m refills for Arianna unwinder
250m and 500m drums				
Compression type "F"	CMPMC37	EX6-4,9/8,3	EX6-4,9/8,3	---
PPC connector:	CMPMC37-A*	EX6-4,9/8,3-A*	EX6-4,9/8,3-A*	---
Crimp type "F" connector:	MP-CRP5	MP-CRP7	MP-CRP7	---
Screw type "F" connector:	C.TV.FM.5	C.TV.FM.7	C.TV.FM.7	---
	C.TV.FM.5 Oring	C.TV.FM.7 Oring	C.TV.FM.7 Oring	---

*=AquaTight for outdoor use



The new label with all the reference norms currently in force.

OUR PRODUCTS ARE MANUFACTURED IN COMPLIANCE WITH: CEI 46-1 (construction parameters); EN 50117 (screening efficiency); CEI EN 50289(SA test methods); IEC 60332-1-2(cables with LSZH and PVC jacket); CPR305/11(EN 50575:2014)

Messi & Paoloni dal 1946

MIC36+2x0.50

TVCC HD

MIC50+2x0.50

ELECTRICAL DATA		
MODEL:	MIC36+2x0.50	MIC50+2x0.50
Impedance:	75 Ohm	75 Ohm
Capacitance:	52 pF/m	52 pF/m
Velocity ratio:	85%	85%
Inner conductor resistance:	556 Ohm/Km	34 Ohm/Km
Outer conductor resistance:	80 Ohm/Km	55 Ohm/Km

ATTENUATION (± 5%) - dB/100m		
MODEL:	MIC36+2x0.50	MIC50+2x0.50
2 MHz	5,0	0,9
3 MHz	5,2	1,1
4 MHz	5,4	1,3
5 MHz	5,7	1,5
10 MHz	6,7	2,5
200 MHz	21,2	11,0
STRUCTURAL RETURN LOSS (SRL) - dB		
30-470 MHz	>28	>30
SCREENING EFFICIENCY - dB		
30-1000 MHz	>75	>80
STANDARD PACKING		
	100m coil	100m coil

Our products are manufactured in compliance with:
 CEI 46-1 (construction parameters); EN 50117 (screening efficiency);
 CEI EN 50289(SA test methods); IEC 60332-1-2(cables with LSZH and PVC jacket);
 CEI UNEL 36762(jacket insulation); CPR305/11(EN 50575:2014)



RoHS COMPLIANT 2002/95/EG



ALSO WITH
 LSZH
 SHEATH

White PVC jacket			
MIC36+2x0.50		MIC50+2x0.50	
Ø MIN	Ø MAX	Ø MIN	Ø MAX
7 mm	7,6 mm	7,0 mm	8,45 mm

White PVC jacket	
MIC36+2x0.50	MIC50+2x0.50
Ø 3.6 mm ± 0,05	Ø 5 mm ± 0,05

Red PVC jacket
 Ø nominal 1,53 mm
 Section 0,50 mmq
 Elec. Resistance 43 Ohm/Km

Black PVC jacket
 Ø nominal 0,50 mm
 Section 1,53 mmq
 Elec. Resistance 43 Ohm/Km

Screen made of a sturdy Aluminium-Magnesium alloy **BRAID** (AlMg). The braiding process is operated by means of **16 spools** braiding machines. **HIGHLY EFFECTIVE AGAINST LOW FREQUENCY IMPULSIVE NOISES.**

MIC36+2x0.50	MIC50+2x0.50
Screening perc.: 68% - 48 wires	Screening perc.: 45% - 48 wires

Screening tape, (foil), highly effective against high frequency interferences.
 Screening percentage: 100%

MIC36+2x0.50	MIC50+2x0.50
AL-PET	AL-PET-AL

Physical injection foamed polyethylene dielectric (PEG).

MIC36+2x0.50	MIC50+2x0.50
Ø 1,9 mm ± 0,05	PEG Ø 3,5mm ± 0,05

Annealed inner conductor.
 (annealed = thermal softening process.)

MIC36+2x0.50	MIC50+2x0.50
CCS Ø 0,41 mm	CU Ø 0,81 mm



ARIANNA UNWINDER

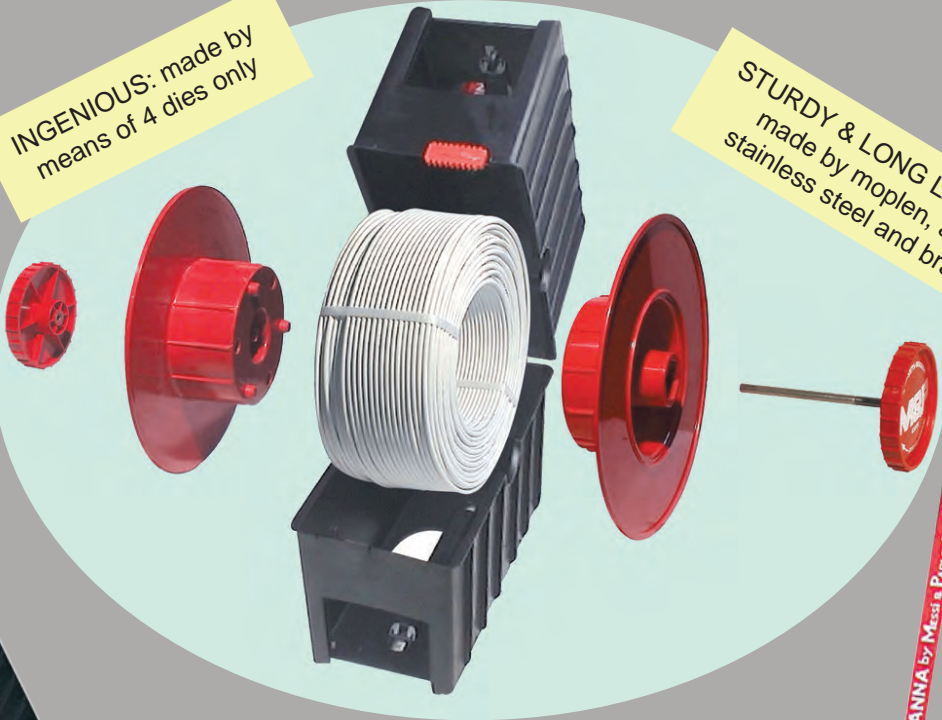
PATENTED



INGENIOUS: made by means of 4 dies only

STURDY & LONG LASTING: made by moplén, abs, stainless steel and brass.

All weak points have been strengthened in order to resist to heavy duty. The shape also lets you use it as . . . an emergency seat or stool.



Two special slots at the back let me hold scissors and screwdriver. (not included in the kit)

It has rubber slip-proof feet.

Free reins!
I can place 4 or 5 Arianna unwinders side-by-side; then connecting the ends to a probe I can simultaneously insert several cables into the duct.

The shoulder strap has a soft rubber pad to cushion the contact point and prevent slipping.

LIGHT: It weights 1,6 Kg only

*All trade-marks mentioned in this catalogue are property of their owners.



ACCESSORIES

QUICK GLIDE

VT150
Not compatible with PPC EX11 and PPC B004-FM



VT300



GA03

FORB1



TRONC1



CONNECTORS



Screening Attenuation in A++ Class

Advised for indoor use

CMPMC 37* - from 5 - 5,4 mm

DIGISAT 123 ELITE
DIGISAT 122 EXPERT
MINISAT 1 PLUS
SPEEDY5-B150
AMG 500
INTSAT 81
ST 53/A



Advised for indoor use

EX6-4,9/8,3* from 6 - 6,5 mm

DIGISAT 523 ELITE
SAT 423/S
AMG 65



Advised for indoor use

EX6-5,1/8,3* from 6,8 - 7 mm

DIGISAT 5 ELITE
DIGISAT 823 ELITE
INTSAT 110 ELITE
DIGISAT 822 EXPERT
FDA-DIGIT EXPERT
PROSAT SILVER ELITE
SPEEDY6-B100
SAT 723/S

Advised for indoor use

EX 11* - cables from 10 - 10,3 mm

INTSAT 170 ELITE
IK 12



AquaTight® Series - waterproof

Advised for outdoor use

CMPMC 37-A* - from 5 - 5,4 mm

DIGISAT 123 ELITE
DIGISAT 122 EXPERT
MINISAT 1 PLUS
SPEEDY5-B150
AMG 500
INTSAT 81
ST 53/A



Advised for outdoor use

EX6-4,9/8,3-A* from 6 - 6,5 mm

DIGISAT 523 ELITE
SAT 423/S
AMG 65



Advised for outdoor use

EX6-5,1/8,3-A* from 6,8 - 7 mm

DIGISAT 5 ELITE
INTSAT 110 ELITE
DIGISAT 823 ELITE
DIGISAT 822 EXPERT
FDA-DIGIT EXPERT
PROSAT SILVER ELITE
SPEEDY6-B100
SAT 723/S

Advised for outdoor use

B004-FM* - cables from 10 - 10,3 mm

INTSAT 170 ELITE
IK 12

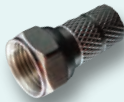


CONNECTORS

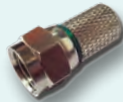
C.TV.FM.10



C.TV.FM.3
C.TV.FM.5
C.TV.FM.6
C.TV.FM.7



C.TV.FM.7 Oring



C.TV.FM.5 Oring



MP-CRP5
MP-CRP6
MP-CRP7



C.TV.F.G+D



C.BNC174.MC
C.BNC36.MC



C.BNC.G



KRM-BNC



Suitable for:
- MIC36+2x0.50
- MIC50+2x0.50

C.RGJ45-S



Suitable for LAN UTP

C.RGJ45
C/GUIDA



Suitable for LAN UTP

*All trade-marks mentioned in this catalogue are property of their owners.

CONNECTORS

screw type	crimp type	compression "F" PPC	waterproof compression "F" PPC	Cable Diameter
C.TV.FM.3	-	-	-	3,6 mm
C.TV.FM.5 / C.TV.FM.5 Oring	MP-CRP 5	CMPMC37 ¹	CMPMC37-A	5,0 - 5,4 mm
C.TV.FM.6	MP-CRP 6	EX6-4,9/8,3 ¹	EX6-4,9/8,3-A	6,0 - 6,5 mm
C.TV.FM.7 / C.TV.FM.7 Oring	MP-CRP 7	EX6-5,1/8,3 ¹	EX6-5,1/8,3-A	6,8 - 7,0 mm
C.TV.FM.10		EX11 ¹	B004-FM ²	10 - 10,3 mm
WATERPROOF JOINTS CONNECTORS PPC				
Adapter from N male t F female				Nm-Ff
Additional rubber protection for compression connectors				WS500
Joint "F" connectors				C.TV.F.G+D
Joint "BNC" connectors				C.BNC.G

(1) Conn. to be used for general purpose: warmly recommended in high moisture environments. (2) Compulsory in underground applications.



ALARM CABLES



GENERAL CHARACTERISTICS

Shielded cable to be used for alarm systems.

The tension test on the jacket identifies the insulation level of the cable:

- GR2 cables: nominal operating tension 300 / 300 V (U_0 / U)
- GR3 cables: nominal operating tension 450 / 750 V (U_0 / U)
- GR4 cables: nominal operating tension 0,6 / 1 KV (U_0 / U)

Don't use it like power cable.

CABLE STRUCTURE

Conductors: flexible conductors in bare copper or copper clad aluminium (CCA).*

Insulation: PVC

Wrapping: Pet foil

Screen: Al/Pet foil, covered 100%

Jacket: PVC fire resistant, white (GR2 e GR3) - blue (GR4) - CEI 20-22 II



CODE GR2	CODE GR3*	CODE GR4*	NOMINAL SECTION (mm ²)	DoP NUMBER
222	222G3	222G4	2 x 0,22	MP0031
422	422G3	422G4	4 x 0,22	MP0032
622	622G3	622G4	6 x 0,22	MP0033
822	822G3	822G4	8 x 0,22	MP0034
5222	5222G3	5222G4	2 x 0,50 + 2 x 0,22	MP0037
5422	5422G3	5422G4	2 x 0,50 + 4 x 0,22	MP0038
5622	5622G3	5622G4	2 x 0,50 + 6 x 0,22	MP0039
5822	5822G3	5822G4	2 x 0,50 + 8 x 0,22	MP0040
275	275G3	275G4	2 x 0,75	MP0041
7222	7222G3	7222G4	2 x 0,75 + 2 x 0,22	MP0042
7422	7422G3	7422G4	2 x 0,75 + 4 x 0,22	MP0043
7622	7622G3	7622G4	2 x 0,75 + 6 x 0,22	MP0044
7822	7822G3	7822G4	2 x 0,75 + 8 x 0,22	MP0045

Standard packing: 100m shrink wrapped coils

CPR 305/11 (EN50575:2014)

*on demand



FLEXIBLE TOOLS CABLES



GENERAL CHARACTERISTICS

Multiconductors cable that thanks to its remarkable flexibility is suitable for mobile connection, for light tools, electrical household appliances, hobbies and gardening electrical machineries.

Nominal operating tension: 300 / 500 V (U_0 / U).

CABLE STRUCTURE

Conductors: extra-flexible conductors in bare copper

Insulation: PVC

Jacket: Orange PVC - CEI 20-22 II



CODE	NOMINAL SECTION (mm ²)	EXTERNAL DIAMETRE MAX (mm)
CUT 21	2 x 1	6,5
CUT 215	2 x 1,5	7,8
CUT 225	2 x 2,5	9,3
CUT 31	3 x 1	7,8
CUT 315	3 x 1,5	8,7
CUT 325	3 x 2,5	10,5

Standard packing: 100m shrink wrapped coils



DOMESTIC USE CABLES



GENERAL CHARACTERISTICS

Multiconductors cable suitable for connecting electrical household appliances.

Nominal operating tension: 300 / 300 V (U_0 / U).

Two conductors cable (flat shape) H03VVH2-F or three conductors cable (round shape) H03VV-F.

CABLE STRUCTURE

Conductors: flexible conductors in bare copper or copper clad aluminium (CCA).

Insulating: PVC

Jacket: PVC fire resistant, white or black - CEI 20-20

CODE	NOM.SEC. (mm ²)	WIDTH MAX (mm)	COLOR
CUD 2075B / CUD 2075N	2 x 0,75	5,9	WHITE / BLACK
CUD 21B / CUD 21N	2 x 1	6,7	WHITE / BLACK

CODE	NOM. SEC. (mm ²)	EXT. DIAM. MAX (mm)	COLOR
CUD 3075B / CUD 3075N	3 x 0,75	6,2	WHITE / BLACK
CUD 31B / CUD 31N	3 x 1	7,1	WHITE / BLACK
CUD 315B / CUD 315N	3 x 1,5	7,5	WHITE / BLACK

Standard packing: 100m shrink wrapped coils



INTERCOM CABLES



GENERAL CHARACTERISTICS

Multiconductors cable suitable for intercom installations and control in general.

CABLE STRUCTURE

Conductors: flexible conductors in bare copper or copper clad aluminium (CCA)*
stranded in concentrics layers

Insulation: PVC

Jacket: grey PVC fire resistant - CEI 20-22 II

CODE	SECTION (mm ²)	EXT. DIAMETRE MAX (mm)	NUMERO DoP
CT 4	4 x 0,50	5,1	MP0046
CT 6	6 x 0,50	5,9	MP0047
CT 8	8 x 0,50	6,3	MP0048
CT 10	10 x 0,50	7,1	MP0049
CT 12	12 x 0,50	7,6	MP0050
CT 14	14 x 0,50	8,0	MP0051
CT 16	16 x 0,50	9,2	MP0052
CT 18	18 x 0,50	9,7	MP0053
CT 20	20 x 0,50	10,2	MP0054

Standard packing: 100m shrink wrapped coils

* on demand

CPR 305/11 (EN50575:2014)



TELEPHONE CABLES - FLAT -



GENERAL CHARACTERISTICS

Multiconductors cable suitable for short connections inside buildings

CABLE STRUCTURE

Conductors: flexible conductors in bare copper

Insulation: Polypropylene

Jacket: black or ivory PVC

CODE	NOM. SEC. (mm ²)	WIDTH MAX (mm)	COLOR
CTP4A	4 x 0,12	5,1	IVORY
CTP4N	4 x 0,12	5,1	BLACK

Standard packing: 100m shrink wrapped coils



TELEPHONE CABLES -TRR-



GENERAL CHARACTERISTICS

Telephone cable type TRR. It's suitable for connecting internal telephonic installations.

CABLE STRUCTURE

Conductor: rigid insulated tinned copper twisted in couples laid in concentrics layers or copper clad aluminium (CCA)

Insulation: PVC

Jacket: grey PVC fire resistant - CEI 20/22 II



CODE	N° COUPLES x DIAM. (mm ²)	EXT. DIAMETE MAX. (mm)	DoP Number
T1C	1 x 2 x 0,6	3,3	MP0055
T1CT	1 x 2 x 0,6 + T	3,5	MP0056
T2C	2 x 2 x 0,6	4,5	MP0057
T2CT	2 x 2 x 0,6 + T	5,0	MP0058
T3C	3 x 2 x 0,6	5,2	MP0059
T3CT	3 x 2 x 0,6 + T	5,3	MP0060
T4C	4 x 2 x 0,6	5,9	MP0061
T4CT	4 x 2 x 0,6 + T	6,2	MP0062
T5C	5 x 2 x 0,6	6,5	MP0063
T5CT	5 x 2 x 0,6 + T	6,9	MP0064
T6C	6 x 2 x 0,6	7,2	MP0065
T6CT	6 x 2 x 0,6 + T	7,4	MP0066
T8C	8 x 2 x 0,6	7,7	MP0067
T8CT	8 x 2 x 0,6 + T	7,9	MP0068
T11C	11 x 2 x 0,6	8,1	MP0069
T11CT	11 x 2 x 0,6 + T	8,5	MP0070
T16C	16 x 2 x 0,6	10	MP0071
T16CT	16 x 2 x 0,6 + T	10,7	MP0072
T21C	21 x 2 x 0,6	12,3	MP0073
T21CT	21 x 2 x 0,6 + T	12,6	MP0074

Standard packing: 250m shrink wrapped coils.

CPR 305/11 (EN50575:2014)



TELEPHONE CABLES -TRANSPOSITION CABLE-



GENERAL CHARACTERISTICS

For internal connections in buildings or exchanges

CABLE STRUCTURE

Conductor: tinned copper

Insulation: PVC fire resistant - CEI 46/5



CODE	SECTION (mm ²)	EXT. DIAMETRE MAX. (mm)
PT25	2 x 0,50	5,1
PT26	2 x 0,60	5,9
PT36	3 x 0,60	6,3

Standard packing: 250m shrink wrapped coils



FLAT CABLES -FRW/2-



GENERAL CHARACTERISTICS

This cable is suitable for connecting table lamps or light electrical appliances .
Not to be used as power cable.

CABLE STRUCTURE

Conductors: flexible conductors in bare copper or copper clad aluminium (CCA). *

Insulation: Flat cable with two conductors coupled side by side, insulated with fire resistant PVC.

CODE	SEC. NOM. (mm ²)	DIMENSION (mm)	COLOR
PCS050O	2 x 0,50	2,1 x 4,3	GOLD
PCS050A	2 x 0,50	2,1 x 4,3	SILVER
PCS050M	2 x 0,50	2,1 x 4,3	BROWN
PCS050N	2 x 0,50	2,1 x 4,3	BLACK
PCS050B	2 x 0,50	2,1 x 4,3	WHITE
PCS10B	2 x 1	2,4 x 5	WHITE

Standard packing: 100m shrink wrapped coils

* on demand



FLAT CABLES -POLARIZED-



GENERAL CHARACTERISTICS

Flat twin polarized conductors, suitable for HI-FI equipments.

CABLE STRUCTURE

RN items: two bare copper conductors or copper clad aluminium (CCA) *

PL items: one bare copper and one tinned copper

Insulation: flat cable with two conductors coupled side by side, insulated with fire resistant PVC

CODE	NOM. SEC. (mm ²)	DIMENSION (mm)	COLOR
PCS050RN	2 x 0,50	2,4 x 4,8	RED / BLACK
PCS075RN	2 x 0,75	2,5 x 5	RED / BLACK
PCS10RN	2 x 1	2,6 x 5,2	RED / BLACK
PCS15RN	2 x 1,5	2,7 x 5,6	RED / BLACK
PCS25RN	2 x 2,5	3,45 x 6,75	RED / BLACK
PCS10PL	2 x 1	2,6 x 5,2	POLARIZED

Standard packing: 100m shrink wrapped coils

* on demand





LAN CABLES

CONSTRUCTIVE PARAMETERS



CAT. 5/E

CAT. 6

Parameter	Symbol	CAT. 5/E		CAT. 6	
		UTP CAT. 5E CU* and CCA	FTP CAT. 5E	UTP CAT. 6 CU* and CCA	FTP CAT. 6
Conductor	nom Ø	24 AWG	24 AWG	23 AWG	23 AWG
Insulation	Ø	PE < 1 mm	PE < 1 mm	PE < 1,1 mm	PE < 1,1 mm
No. Couples		4	4	4	4
Cross Shaped PE separator	separator	-	-	PE	PE
Pet wrapping		-	POL	-	POL
Drain wire		-	Si	-	Si
Screen		-	Al/Pol	-	Al/Pol
Screening percentage	%	-	100	-	100
Jacket Thickness of the Jacket	Ø mm ± 0,3	PVC/LSZH/PE 5,4 min 0.5 mm	LSZH 6,5 min 0.5 mm	PVC/PE 7 min 0.5 mm	LSZH 7,2 min 0.5 mm

ELECTRICAL DATA

Nominal Impedance	Frequency Range	CAT. 5/E				CAT. 6			
		NEXT	PSNEXT	PSELFEXT	ATTEN.	NEXT	PSNEXT	PSELFEXT	ATTEN.
0-100 MHz		100 ± 15%				100 ± 15%			
100-250 MHz		-				100 ± 22%			
1 MHz - dB/100m		65,3	62,3	60,8	2,1	66,0	64,0	64,0	2,1
10 MHz - dB/100m		50,3	47,3	40,8	6,3	59,3	57,3	47,0	6,0
16 MHz - dB/100m		47,2	44,2	36,7	8,0	56,2	54,2	43,0	7,6
31,25 MHz - dB/100m		42,9	39,9	30,9	11,4	51,9	49,9	37,1	10,7
62,5 MHz - dB/100m		38,4	35,4	24,9	16,5	47,4	45,4	31,1	15,5
100 MHz - dB/100m		35,3	32,3	20,8	21,3	44,3	42,3	27,0	19,9
155 MHz - dB/100m		-	-	-	-	41,4	39,4	23,2	25,3
200 MHz - dB/100m		-	-	-	-	39,8	37,8	21,0	29,2
250 MHz - dB/100m		-	-	-	-	38,3	36,3	19,0	33,0

Standard packing: 305m cardboard boxes

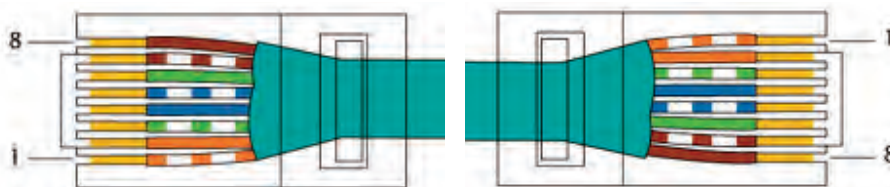
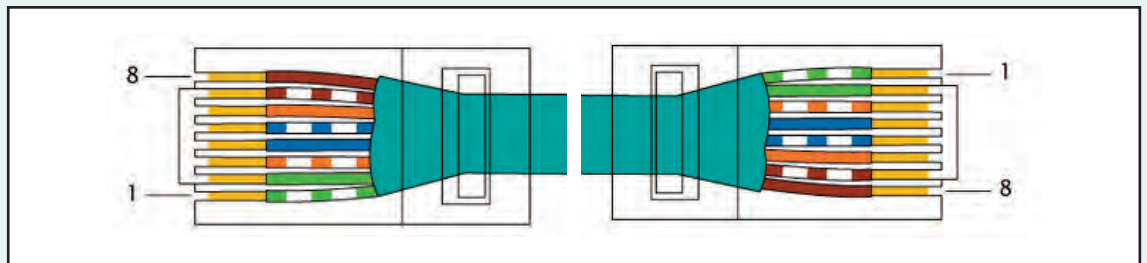
*Referanc norm: ISO/IEC 11801 - EN 50173

REFERENCE NORM: CPR 305/11 (EN50575:2014)

Models	DoP Number
UTP cat 5/E PVC	MP0075
UTP cat 5/E PE	MP0082

Models	DoP Number
UTP cat 6 PVC	MP0076
UTP cat 6 PE	MP0081

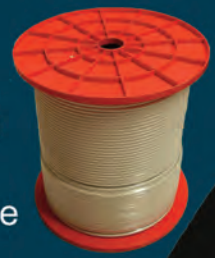
Type A direct cabling procedure EIA/TIA-568A



Type B direct cabling procedure EIA/TIA-568B



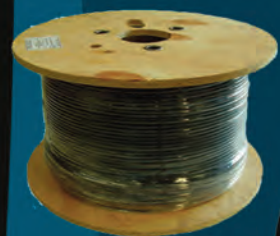
200m, 250m or 500m according to cable diameter



250m or 500m according to cable diameter



24000m, 36000m or 38400m according to cable diameter



500m to 1000m wooden drums



6X

100m
For Ø ext. < 7mm

150m
For Ø ext. < 5,6mm

200m
For Sky homologated cable
MINISAT 1 Plus SN and cables
with Ø ext. < 4,9mm



600m

900m

1200m

	ENGLISH
(Cu)	Bare copper
(CuSn)	Tinned copper
(CuAg)	Silver plated copper
(CCS)	Copper plated steel
(CCA)	Copper clad aluminium
(Cu-Pol)	Copper-Polyester tape
(Al-Pol-Al)	Aluminium-Polyester-Aluminium tape
(Al-Pol red)	Aluminium-Polyester red tape
(PE)	Solid polyethylene
(PEG)	Foamed polyethylene
(PVC)	Polyvinyl chloride
(Pol)	Polyester tape
(PJ)	Petrol Jelly
(*)	On request

MESSI & PAOLONI S.R.L.

Via Giovanni Conti n°1 - 60131 Ancona • Tel +39.071.2861527 - 2861528 • Fax +39.071.2861736 - www.messi.it • info@messi.it

* The information on this brochure is purely indicative. MESSI & PAOLONI reserves the right to make any changes to the models described in this brochure at any time for technical or market reasons.